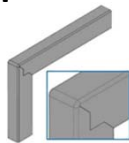


# STEEL Solutions for Safe and Smart Structures of Electric Vehicles

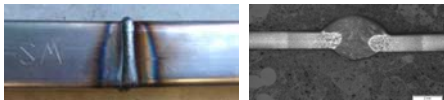
## Putting high strength Steel at the Forefront of a new trend in electric vehicles

### Manufacturing solution

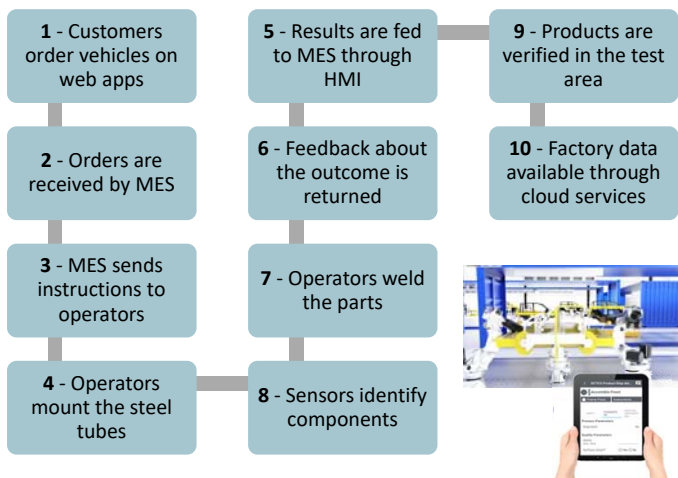
“Skeleton-frame” chassis made of advanced high strength tubular steels welded.



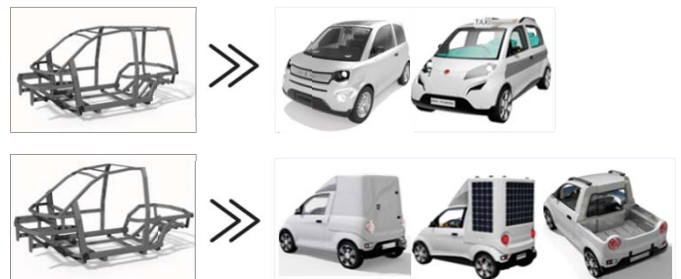
**Welding optimisation:** MIG/MAG welding has demonstrate to offer more robust welds than laser welding.



### Assembly manufacturing line concept



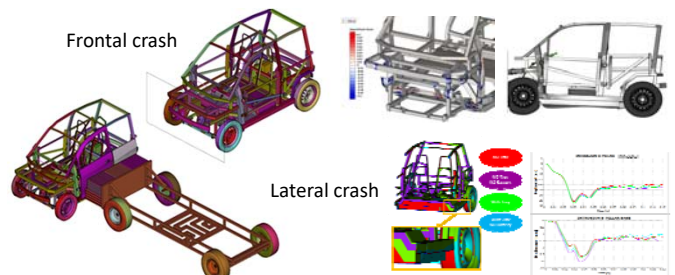
### Modular and flexible structural design



Low investment manufacturing will be achieved by a modular and flexible structural design.

### Improving design regarding safety of...

**...vehicle occupants.** Vehicle structure designed to accomplish Euro NCAP and UN R95 safety requirements. Virtual model simulations are being performed to assess structure design.



**...vulnerable users.** Studies of the behaviour of the vehicle in the event of a pedestrian accident.



#### Next steps

- Chassis fatigue simulations for validation
- Prototypes manufacture
- Mechanical and crash testing
- Validation of project results

#### Consortium



#### Acknowledgment

STEEL S4 EV has received funding from the European Commission in the frame of the Research Fund for Coal and Steel (RFCS).

